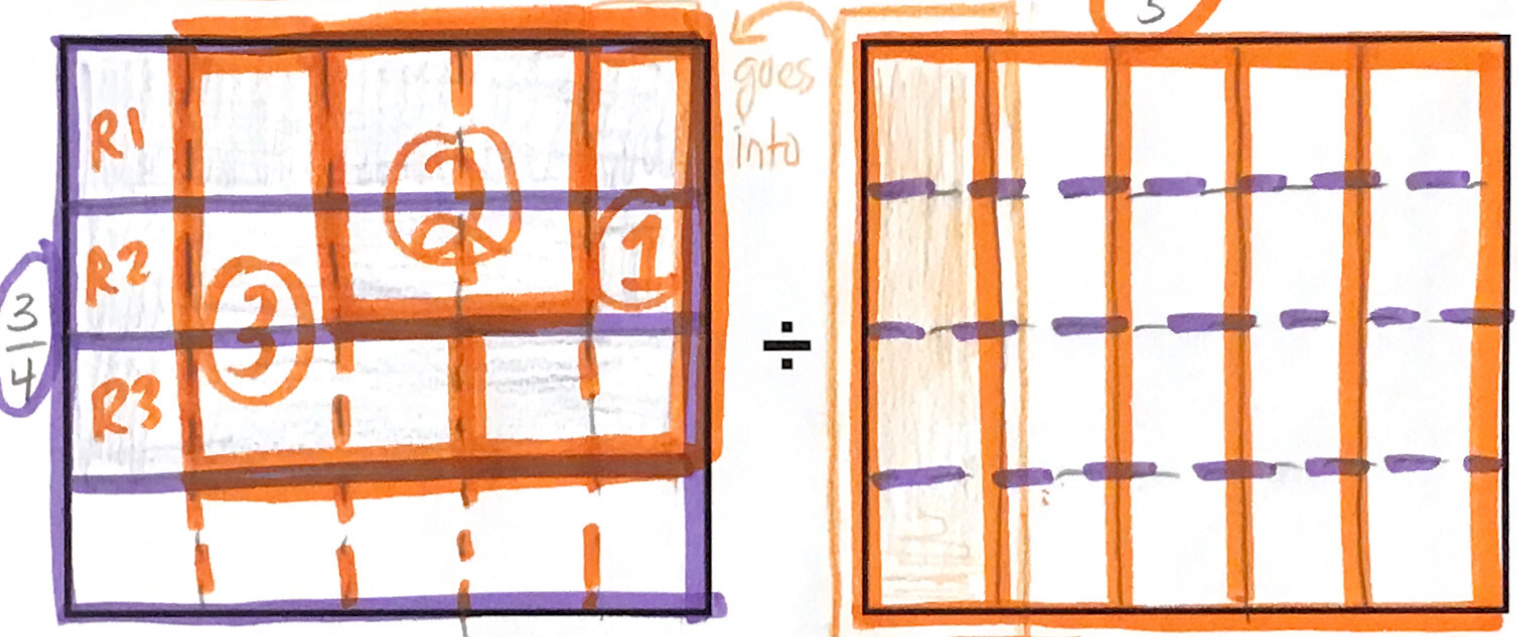


Use a model to solve a fractional division problem.

**MODEL**

My problem is:  $\frac{3}{4} \div \frac{1}{5}$



My final answer is  $\frac{3}{4}$

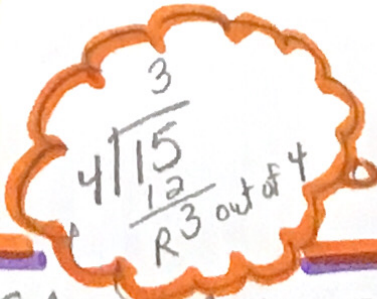
Check your answer with the standard algorithm below. (X by the Reciprocal)

**ALGORITHM**

Keep    switch    Flip (reciprocal)  
⊗

$$\frac{3}{4} \div \frac{1}{5} = \frac{3}{4} \cdot \frac{5}{1} = \frac{3 \cdot 5}{4 \cdot 1} = \frac{15}{4} = \frac{3}{4}$$

Solve a division problem by multiplying by the reciprocal!



YOU CAN GET THE SAME ANSWER BOTH WAYS